

The Silver Lake Stairways

N

Neighborhood Council Boundary

Silver Lake
NEIGHBORHOOD COUNCIL

Silver Lake, Los Angeles CA

GUIDE TO SILVER LAKE STAIRWAYS

1 CICERO DRIVE	12 OCCIDENTAL-EASTERLY (S)	23 MURRAY DRIVE	34 LANDA-LUCILE	45 LOWER SILVER LAKE AVE
2 ROTARY-REDESDALE	13 ANGELUS AVENUE	24 HAMILTON WAY	35 LANDA SIDEWALK	46 ROSELIN
3 UPPER SWAN	14 BELLEVUE-CORONADO	25 ELEVADO STREET	36 CORRALITAS	47 ADELBERT
4 MIDDLE SWAN	15 MARATHON	26 PARKMAN-WESTERLY	37 EARL	48 RED CAR VIADUCT
5 LOWER SWAN	16 RENO	27 MANZANITA ST.	38 LOMA VISTA PLACE	49 WAVERLY DRIVE
6 LANDA-REDESDALE	17 ROBINSON	28 TESLA AVENUE	39 EDENDALE	50 IVAN HILL LOWER
7 EASTERLY-FANNING	18 VENDOME SPLIT	29 MORENO DRIVE	40 APEX	51 IVAN HILL UPPER
8 SILVER LAKE-OCCIDENTAL	19 MUSIC BOX	30 LANTERMAN TERR	41 MATTACHINE (COVE)	52 FARGO
9 OCCIDENTAL-EASTERLY (N)	20 DESCANSO	31 TRACY STREET	42 HIDALGO	
10 EASTERLY-SILVERWOOD (N)	21 UPR. MICHELTORENA	32 MEADOW VALLEY	43 UPR. SILVER LAKE AVE	
11 EASTERLY-SILVERWOOD (S)	22 LWR. MICHELTORENA	33 LANDA-EDGECLIFF	44 MIDDLE SILVER LAKE AVE	

The Silver Lake Stairways

A Great Asset for Walkable Los Angeles

STAIRWAYS ARE AN INTEGRAL PART OF SILVER LAKE.

Today, over 50 stairways thread through our community, connecting the hillsides, homes, and businesses.

The stairways, or stair-streets, were first built by early Los Angeles developers to quickly connect pedestrians between steep hillside residential areas and the lower commercial streets, schools, and trolley lines. Some houses without access to vehicular roads were even built on these stairways.

As Los Angeles builds a sustainable future that emphasizes transit, bicycles and walking, our beloved stairways are enjoying a long-deserved renaissance. Awareness has increased as the community recognizes the

value of these often-hidden public assets. Their enjoyment is part of the unique character of Silver Lake.

The stairways have starred in Los Angeles film history. A Silver Lake stairway is featured in the first Oscar-winning live action short film, *The Music Box*. Filmed in 1932, the Laurel and Hardy comedy was shot on the stairway that connects Descanso Drive and Vendome Street. Other stairways have appeared in numerous movie TV shows and music videos.

Some stairways are painted with art, such as the Micheltorena and Swan Place Stairs. Public walking tours follow the many stairways through Silver Lake, and the stairways are a daily part of many residents' exercise routines.

Over time, many stairways were neglected or fell into disrepair. Some

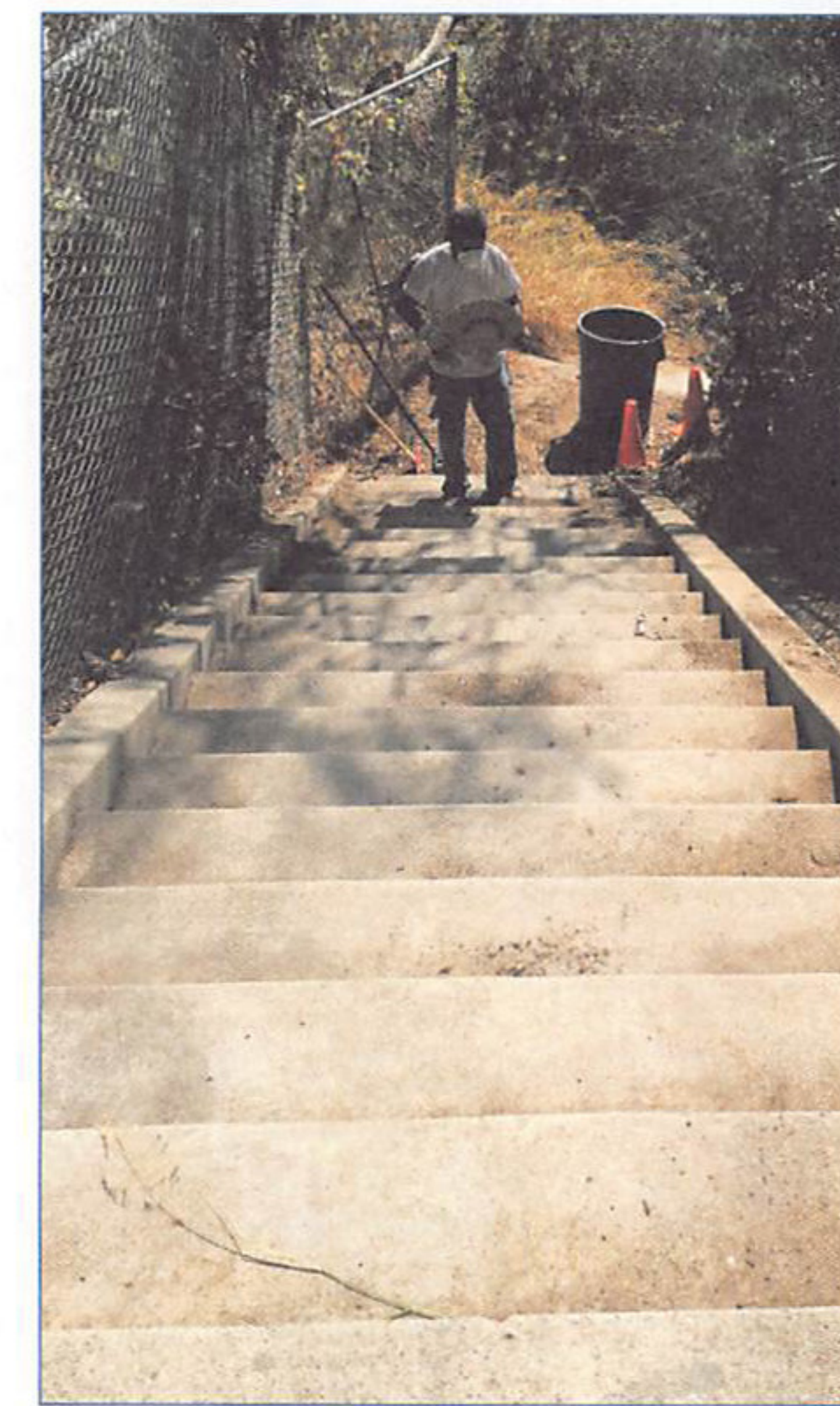
were closed, and community members are working to have these once again opened to the public.

Discover a stairway you've not known and become part of what makes Silver Lake unique. There's more resources to help you learn and enjoy the stairs. With guide books such as Charles Fleming's *Secret Stairs: A Walking Guide to the Historic Staircases of Los Angeles*, many enjoy group walks up and down the stairways as they explore the neighborhoods of Silver Lake. Check out [facebook.com/SecretStairs](https://www.facebook.com/SecretStairs) for the book, events, the smart phone app and more.

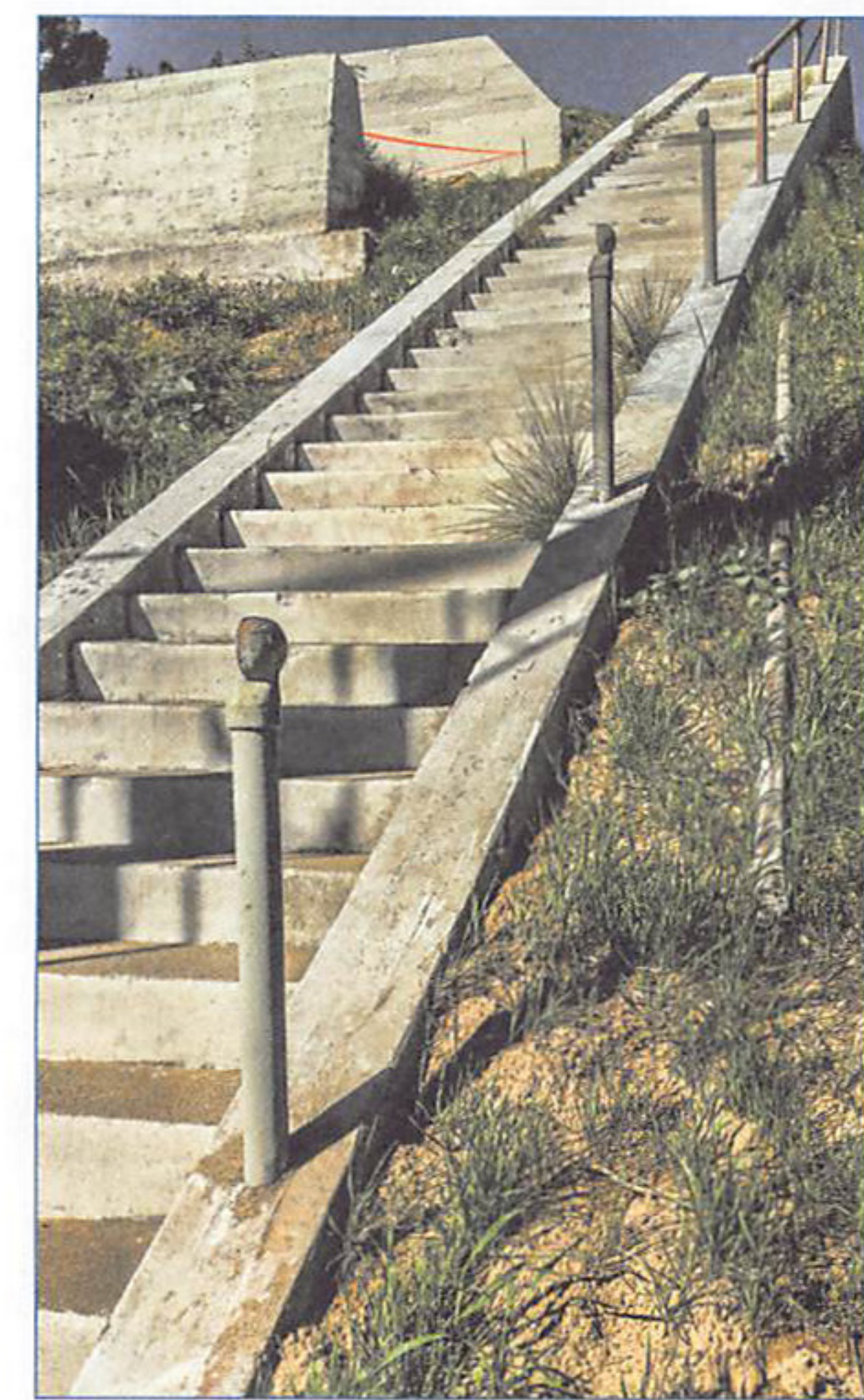
Thanks to the hard work of many community members, these historical stairways are once again a visible and cherished part of Silver Lake – and will be far into the future.



When Nasturtiums are in spring bloom, even overgrown stairways can be a lovely respite from the stresses of city life.



L.A. City Councilmembers and other community organizations like the Silver Lake Improvement Association collaborate to help maintain Silver Lake's Stairways.



Stairway to nowhere? Here's the stairs to the former Red Car Trolley station, where a trestle bridge once spanned Fletcher Drive at Riverside Blvd. The Red Car brought riders from the San Fernando Valley through Silver Lake and Echo Park to the historic original subway in Downtown. Many stairways served stops along the line.

Get Involved! Adopt a Stair!

You'll see this sign on many of Silver Lake's Stair Streets. It's a reminder of the asset we share, and how neighbors are volunteering to maintain and improve their nearby stairs. Stairway adopters connect

neighbors around their beloved stairs, bringing people together to celebrate and enhance their own community treasure.



GET INVOLVED! Volunteer to adopt a Silver Lake stairway at: silverlakenc.org/adopt-a-stairway-program. And join a neighborhood cleanup or improvement event!

This map was produced by the Silver Lake Neighborhood Council of the City of Los Angeles, California.

Special thanks to those who helped make this project possible:

Howard Peterson
Lisa Hart
Christine Kantner
John Wingler
Genelle LeVin,
Silver Lake Improvement Assn.

Copy and Base Map:
Scott Plante

Design, Copy and Photography:
Craig Collins

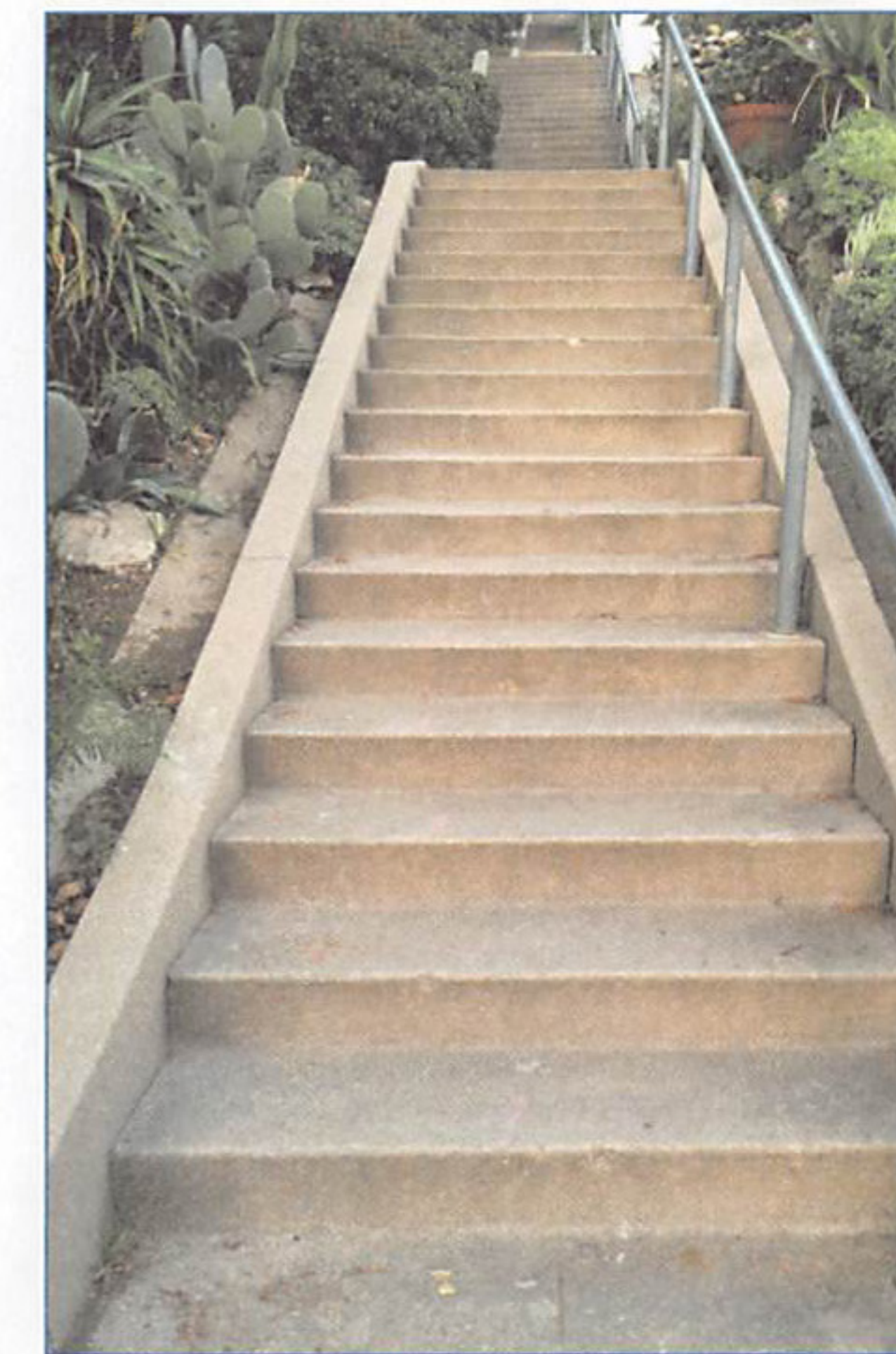
©2017



The Silver Lake Stairways
of Los Angeles
Map and Guide



The elegant Fargo St. Stairway is one of a few stairways currently closed to the public and unmaintained. Working with neighbors and the City of Los Angeles, they may some day be reopened.



The Loma Vista Place Stairway, Silver Lake's longest with 348 steps up and over the hill from Glendale Blvd. to Alessandro Way.



Neighbors enjoy a spring afternoon sprucing up their stairway and getting to know each other.